



// ONE BRAND // ONE SOURCE // ONE SYSTEM

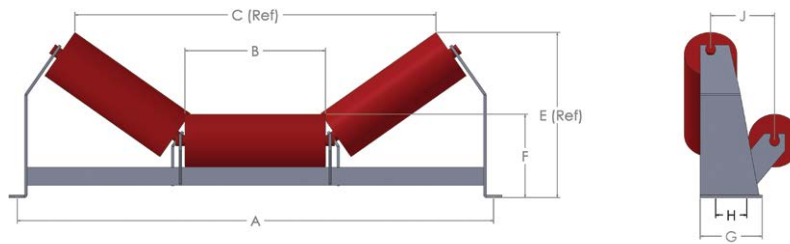


// SERVICE // MATERIAL PROCESSING // SURFACE PROTECTION // AUTOMOTIVE

REMA TIP TOP
IDLERS PRODUCT CATALOGUE



TROUGHING IDLERS



TROUGHING S25 127ø

SERIES	25		SERIES 25 152ø IDLERS AVAILABLE ON REQUEST*							
No ROLLS	3		Also available in Series 25 127ø HDPE							
ROLL DIA	127						20°		35°	
Belt Width	A	B	F	G	H	Slotted Holes	E	C	E	C
450	686	190	203	150		14x25	279	526	310	486
600	838	240	203	150		14x25	283	668	338	617
750	990	290	203	150		14x25	300	812	367	749
900	1144	340	203	150		14x25	317	956	396	888
1050	1296	390	203	150	100	14x25	334	1100	424	1013
1200	1448	450	203	150	100	14x25	354	1273	459	1171
1350	1600	500	203	300	240	18x30	371	1417	487	1303
1500	1752	560	203	300	240	18x30	392	1589	522	1461
1650	1904	610	203	300	240	18x30	409	1733	551	1593
1800	2058	660	203	300	240	18x30	426	1877	579	1725
2100	2362	765	203	420	310	18x30	465	2187	642	2004
2400	2668	870	203	420	310	18x30	501	2490	702	2281

TROUGHING S30 127ø

SERIES	30		SERIES 30 152ø IDLERS AVAILABLE ON REQUEST*							
No ROLLS	3									
ROLL DIA	127						20°		35°	
Belt Width	A	B	F	G	H	Slotted Holes	E	C	E	C
1050	1296	390	265	300	240	18x30	395	1090	482	989
1200	1448	450	265	300	240	18x30	416	1263	517	1147
1350	1600	500	265	300	240	18x30	433	1407	545	1279
1500	1752	560	285	300	240	18x30	474	1581	600	1438
1650	1904	610	285	370	310	18x30	491	1724	629	1569
1800	2058	660	285	370	310	18x30	508	1868	657	1701
2100	2362	765	285	370	310	18x30	544	2170	717	1978
2400	2668	870	285	370	310	18x30	580	2472	778	2255

FLAT RETURN IDLERS



FLAT RETURN S25 127ø

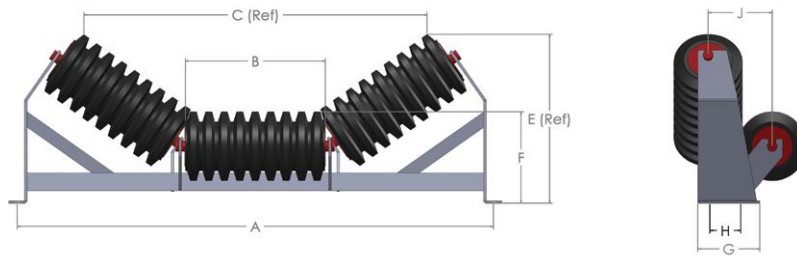
SERIES	25				
ROLL DIA	127				
No ROLLS	1				
DROP HEIGHT (D) in mm	40 or 90				
Belt Width	A	B	G	H	Slotted Holes
450	686	536	150	100	14x25
500	736	586	150	100	14x25
600	838	688	150	100	14x25
750	990	840	150	100	14x25
900	1144	994	150	100	14x25
1050	1296	1146	150	100	14x25
1200	1448	1298	150	100	14x25
1350	1600	1450	150	100	14x25
1500	1752	1602	150	100	14x25
1650	1904	1754	150	100	14x25
1800	2058	1908	150	100	14x25

FLAT RETURN S30 152ø

SERIES	30				
ROLL DIA	152				
No ROLLS	1				
DROP HEIGHT (D) in mm	40 or 90				
Belt Width	A	B	G	H	Slotted Holes
1050	1296	1146	150	100	14x25
1200	1448	1298	150	100	14x25
1350	1600	1450	150	100	14x25
1500	1752	1602	200	150	18x30
1650	1904	1754	200	150	18x30
1800	2058	1908	200	150	18x30

* IDLER HEIGHT WILL CHANGE

TROUGHING IMPACT IDLERS



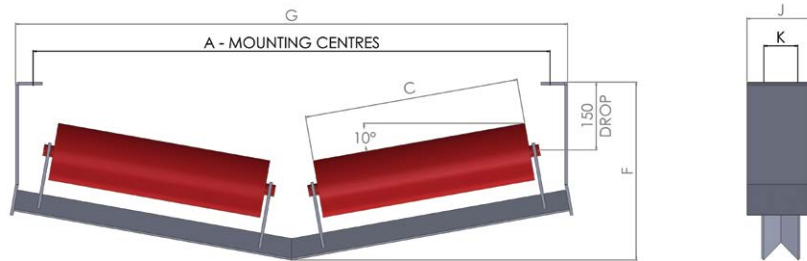
TROUGHING IMPACT S25 152ø

SERIES	25		SERIES 25 133ø IDLERS AVAILABLE ON REQUEST*							
No ROLLS	3									
ROLL DIA	127						20°		35°	
Belt Width	A	B	F	G	H	Slotted Holes	E	C	E	C
600	838	240	215	180	150	18x30	294	660	348	603
750	990	290	215	180	150	18x30	311	804	377	735
900	1144	340	215	180	150	18x30	329	948	405	867
1050	1296	390	215	180	150	18x30	346	1091	434	998
1200	1448	450	215	180	150	18x30	366	1264	468	1157
1350	1600	500	215	300	240	18x30	383	1408	497	1289
1500	1752	560	215	300	240	18x30	404	1581	531	1447
1650	1904	610	215	300	240	18x30	421	1725	560	1579
1800	2058	660	215	300	240	18x30	438	1869	589	1711
2100	2362	765	215	420	310	18x30	465	2187	642	2004
2100	2362	765	203	420	310	18x30	465	2187	642	2004

TROUGHING IMPACT S30 152ø

SERIES	30		SERIES 30 133ø IDLERS AVAILABLE ON REQUEST*							
No ROLLS	3									
ROLL DIA (D)	152						20°		35°	
Belt Width	A	B	F	G	H	Slotted Holes	E	C	E	C
1050	1296	390	265	300	240	18x30	395	1090	482	989
1200	1448	450	265	300	240	18x30	416	1263	517	1147
1350	1600	500	265	300	240	18x30	433	1407	545	1279
1500	1752	560	285	300	240	18x30	474	1581	600	1438
1650	1904	610	285	370	310	18x30	491	1724	629	1569
1800	2058	660	285	370	310	18x30	508	1868	657	1701
2100	2362	765	285	370	310	18x30	544	2170	717	1978
2400	2668	870	285	370	310	18x30	580	2472	778	2255

V-RETURN IDLERS



V-RETURN 127ø

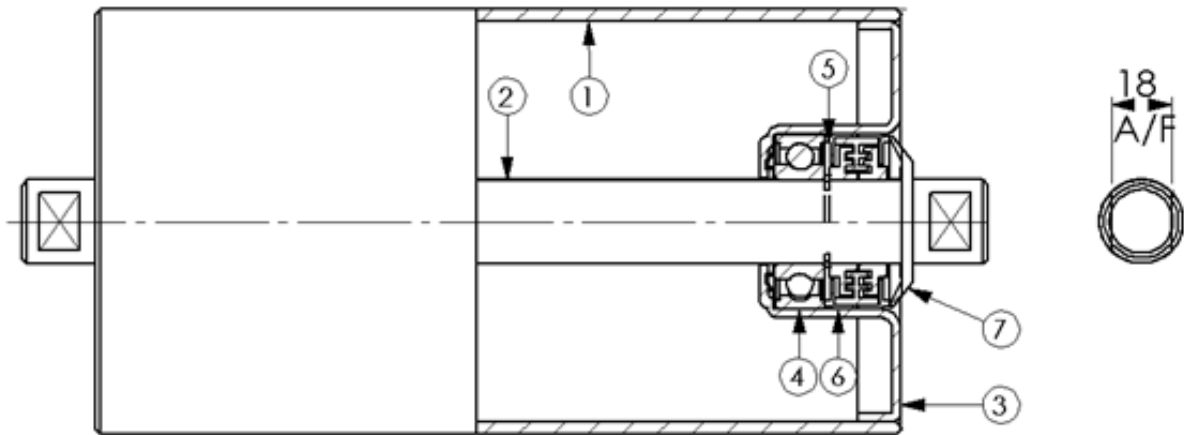
SERIES	25/30							Slotted Holes
ROLL DIA	127							
No ROLLS	2							
Belt Width	A	C	F	G	J	K	Slotted Holes	
600	838	300	377	908	150	100	14x25	
750	990	400	390	1060	150	100	14x25	
900	1144	475	404	1214	150	100	14x25	
1050	1296	560	418	1366	150	100	14x25	
1200	1448	635	431	1518	150	100	14x25	
1350	1600	720	444	1670	150	100	14x25	
1500	1752	800	458	1822	150	100	14x25	
1650	1904	885	471	1974	150	100	14x25	
1800	2058	965	485	2128	150	100	14x25	

V-RETURN 152ø

SERIES	25/30							Slotted Holes
ROLL DIA	152							
No ROLLS	2							
Belt Width	A	C	F	G	J	K	Slotted Holes	
1050	1296	560	418	1366	170	100	14x25	
1200	1448	635	431	1518	170	100	14x25	
1350	1600	720	444	1670	170	100	14x25	
1500	1752	800	458	1822	220	150	18x30	
1650	1904	885	471	1974	220	150	18x30	
1800	2058	965	485	2128	220	150	18x30	
2100	2362	1146	533	2432	310	240	18x30	
2400	2668	1298	540	2738	310	240	18x30	

* IDLER HEIGHT WILL CHANGE

SECTION THROUGH STEEL IDLER



Closed end shafts supplied as standard unless open end specified.

1. $\varnothing 127$ nominal diameter steel tube, electrically welded high yield stress steel. To SANS 657:Part III. Also available in $\varnothing 152$ diameter steel tube configuration.
2. $\varnothing 25$ mm bright mild steel solid shafting, to limits specified for accurate radial clearance of inner bearing race. Also available with $\varnothing 30$ mm. To BS 970 Part 1 Grade 070m20 En3B
3. 2.5mm thick die stamped steel head, to within tolerances that guarantee minimum T.I.R. of roll on final assembly.
4. 6205 Deep groove ball bearing – dynamic load rating of 14900 Newtons. Static load rating of 7800 Newtons. 6306 Deep groove ball bearing used with $\varnothing 30$ mm mild steel shafting.
5. Circlip positioned axially to provide 0.7mm end play maximum. To SANS1313-1.
6. Nylon ± 65 mm path 5-part labyrinth seal.
7. Flinger ring with low contact friction.

Benefits

- Low seal friction.
- Manufactured to controlled Quality Standards.
- Ovality and Concentricity to within limits set by SANS.
- Factory greased for life.



// ONE BRAND // ONE SOURCE // ONE SYSTEM

//SERVICE
 //MATERIAL PROCESSING
 //SURFACE PROTECTION
 //AUTOMOTIVE

REMA TIP TOP SOUTH AFRICA (Pty) Ltd.
 22-24 Lincoln Road, Nedstadt Industrial Sites
 Benoni, 1500
 Phone: +27 (0)11 741 2500
 Fax: +27 (0)86 521 3874
 info@rematip.top.co.za
www.rema-tiptop.co.za

