



// ONE BRAND // ONE SOURCE // ONE SYSTEM



// SERVICE // MATERIAL PROCESSING // SURFACE PROTECTION // AUTOMOTIVE

REMA TIP TOP
REMAMILL



Editor

REMA TIP TOP SOUTH AFRICA (Pty) Ltd.

22 - 24 Lincoln Road, Benoni, 1500

Phone: +27 (0)11 741 2500


info@rematiptop.co.za

www.rema-tiptop.co.za

Legal Notice

All information is given to the best of our knowledge. All specifications are to be considered non-binding information. Any claim for damages of any kind is excluded. We reserve the right to change technical specifications without prior notice, provided that they ensure product improvement. The information presented is based on technical experience but does not guarantee a product's suitability for specific applications, and does not relieve the users of the responsibility to undertake their own testing, including where any third-party trademark rights are concerned. For special applications and operating conditions with regard to temperature, UV light, ozone, acids and alkaline solutions, dynamic and static forces, tensions, elongations and other influences, contact your local REMA TIP TOP distributor for technical advice.

Operating and working instructions, product information and general instructions on the vulcanization properties of natural and synthetic rubber should be followed carefully. The mechanical and physical values presented for our products only apply to the material listed (without bonding layer and without fabric) based on the accompanying inspections for approval; these represent statistical product data, but not guaranteed product properties. Detailed technical data sheets for each single product are available upon request. The weight indications (kg/m², kg/m, etc.) solely represent statistical values and are not necessarily identical to the actual weights. The weights indicated are merely guidelines for the handling, transport and application of our products. The dimension tolerances are based on



part 5 of DIN 7715, classification P3 (admissible dimension tolerances for sheets) and DIN ISO 3302-1, classification M4 (molded parts made of soft-rubber). Other tolerances of specific products for special applications are subject to a mutual agreement and must be stipulated in a special contract. Products containing hazardous substances are labeled in accordance with the regulations (EG) No. 1907/2006 for the classification, packaging and labeling of hazardous materials and preparations.

In order to preserve product properties, the storage conditions indicated in DIN 7716 should be followed (including storing the product in the original package and in an area that is dry, cool and dark).

REMA TIP TOP REMA MILL



REMAMILL mill lining	4
Lifter bars - Rubber	4
Lifters bars - Polysteel	4
Shell plates	4
Head plates	4
Grate plate	4
End profiles and filling segments	5
Discharger	5
Center cone	5
Manhole cover	5
TT-Fastening System	5
Services Supplied	5
Questionnaire	7



REMA TIP TOP REMAMILL

REMAMILL mill lining

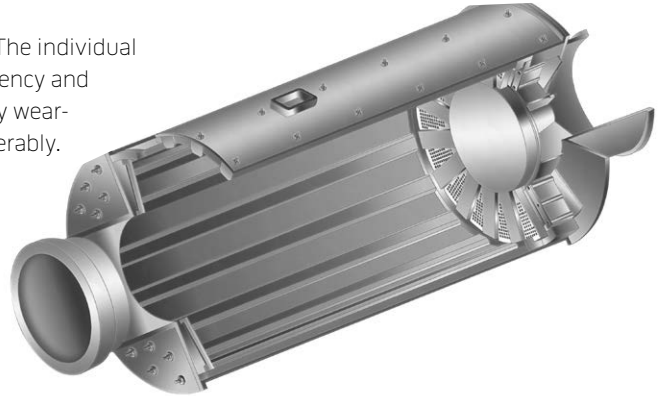
REMAMILL mill lining reduces operating costs and increases productivity. The individual design of the lining, adapted to each customer's needs, improves mill efficiency and output many times over and thereby significantly cuts energy costs. Highly wear-resistant elastomer materials prolong service-life and reduce noise considerably.

Advantages of REMAMILL

- Individual design tailored to meet your milling requirements
- Increased capacity and output
- Absolute operating safety
- Reduces noise
- Low weight
- Simple, quick and safe to install
- More economical in comparison to steel liners

Area of application

- Autogenous (AG) mills
- Semi-autogenous (SAG) mills
- Ball mills
- Pebble mills
- Rod mills
- Ceramic mills (salt mills, continuous mills)
- Washing and slurry drums
- De-barking drums
- Scrubbers



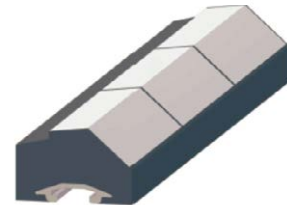
Lifter bars - Rubber

- Lifting of grinding media and the material
- Beveled for optimal cataract effect
- Fastening of shell plates
- Fastening profile made for the specific purpose of aluminium or steel



Lifters bars - Polysteel

- Lifting of grinding media and the material
- Beveled for optimal cataract effect
- Fastening of shell plates
- Fastening profile made for the specific purpose of aluminium or steel
- For heavy duty application (Primary milling)



Shell plates

- Wear protection for the mill shell
- Fastening lips made of steel or rubber
- Fixed by lifters



Head plates

- Lining of the head
- Fastening lips made of rubber
- Fixed by lifters



Grate plate

- Sifting of crushed material
- Fastening lips made of rubber
- Fixed by lifters, pulp lifters and connecting profile



End profiles and filling segments

- Transition between the shell and head lining
- Multiple parts for easier installation



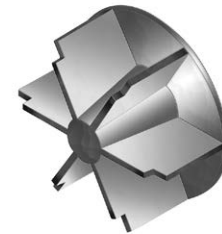
Discharger

- Transport of milled material
- Steel construction with high-quality vulcanized rubber wear protection



Center cone

- Central material discharge element
- Steel construction with high-quality vulcanized rubber wear protection



Manhole cover

- Manhole cover with adapted lifter and shell plates
- Form made of steel with high-quality vulcanized rubber wear protection
- Adjusted lifters and shell plates screwed on manhole door lid



TT-Fastening System

- TT-Fastening System: Consists of forged TT bolts with washer, elastomer seal and nut
- Clamp Block Fastening System: Consists of clamp block with washer, elastomer seal and nut



Clamp Block
Fastening System



TT-Fastening System

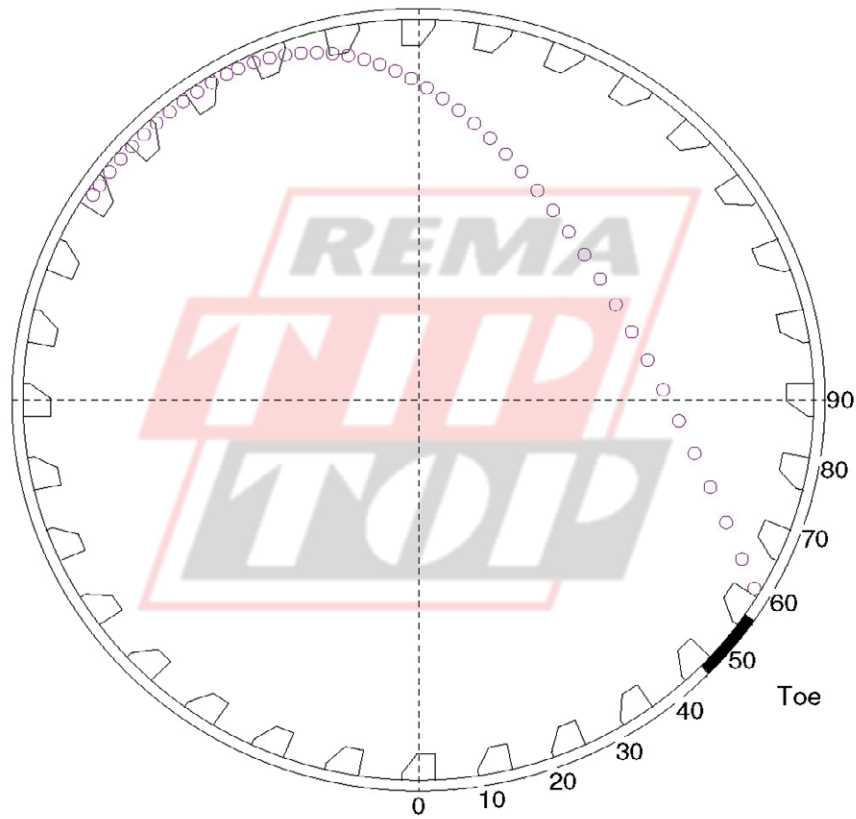
Services Supplied

- Installation of Liners or supervision of installation can be provided
- Monthly wear measurements and submitting of reports to the Client
- Stock management by taking stock
- Part list and General Arrangement
- Drawing provided to the client after placement of Order

Information on the various sizes and profile versions of all items is available on request.
A detailed questionnaire is included in the enclosures.



REMA TIP TOP
REMAMILL



Telephone No.:	
Date:	
Enquiry No.:	
Proposal No.:	
Client Data	
Customer Name:	
Ore Type:	Limestone
Mill Type:	SAG Ball Mill
Feed Size:	23mm
Feed Rate:	200 t/ph
Mill Temperature:	Amb
Mill Data	
Mill Diameter:	5.03m
Mill Length:	10.82m
No. Of Rows:3	2
Mill Filling:	35%
Media Diameter:	80mm

Lifter Specifications							
Units mm & % crit, Angle from base							
○	WidthH	eight	AngleH	2A	S/H	Speed	Plate
	210	170	60	40	1.74	74.2	70

QUESTIONNAIRE REMAMILL

Customer:	Contact person:
Phone:	Fax:
Address:	Country (representation):
	E-Mail:

Mill Data

Manufacturer:	Mill Serial No.:
Installed Engine Power: KW	Delivery year:

Conditions of operation

Grinding Stage	<input type="checkbox"/> Primary	<input type="checkbox"/> Secondary	<input type="checkbox"/> Regrind
Type of Mill*	<input type="checkbox"/> Autogeneous (AG) <input type="checkbox"/> Ball <input type="checkbox"/> Multi compartment	<input type="checkbox"/> Semiautogeneous (SAG) <input type="checkbox"/> Pebble <input type="checkbox"/> Batch (additional questionnaire)	<input type="checkbox"/> Rod <input type="checkbox"/> Washing drum
Process*	<input type="checkbox"/> Overflow <input type="checkbox"/> Center peripheral	<input type="checkbox"/> Grate <input type="checkbox"/> Other	<input type="checkbox"/> End peripheral
Process*	<input type="checkbox"/> Wet	<input type="checkbox"/> Dry, max. temperature	°C
Inside diameter* mm	Length (inside) mm		
Inner diameter of the feed trunnion* mm			
Inner diameter of the discharge trunnion* mm			
Heads*	<input type="checkbox"/> Straight	<input type="checkbox"/> Inclined	<input type="checkbox"/> Cupped
Speed*	<input type="checkbox"/> Fixed <input type="checkbox"/> Variable, between	rpm or equal to	% Ncr and rpm
Rotating direction,	seen from feed end: <input type="checkbox"/> Clockwise	<input type="checkbox"/> Anticlockwise	<input type="checkbox"/> Dual
Number of manholes*:			
Numbers of rows*:	Feed end head	Shell	Discharge end head
Grinding media	Type*:	Max. size: mm	Charge volume media: %

Operational data

Type of ground material*:	Max. size of feed*:	mm	
Capacity*:	Product size*:	µm	
Type of water used*	<input type="checkbox"/> Well water	<input type="checkbox"/> Recycled water	<input type="checkbox"/> Other
Oil or chemicals in process water*:	<input type="checkbox"/> Yes	<input type="checkbox"/> No	
pH value of process water*:	Conductivity	µS cm ⁻¹	
Operating: hours / year	Bond work index:	kWh/t	

Existing lining product

Manufacturer:	<input type="checkbox"/> Steel	<input type="checkbox"/> Rubber	<input type="checkbox"/> Other
Thickness of lining: (rubber lining)	Feed end head plate: mm	Lifter: mm	
	Shell plate: mm	Lifter: mm	
	Discharge end head plate: mm	Lifter: mm	

*minimum data required for a preliminary quotation

Place and date	Name	Signature
----------------	------	-----------



Your local contact



// ONE BRAND // ONE SOURCE // ONE SYSTEM

//SERVICE

//MATERIAL PROCESSING

//SURFACE PROTECTION

//AUTOMOTIVE

REMA TIP TOP SOUTH AFRICA (Pty) Ltd.

22-24 Lincoln Road, Nedstadt Industrial Sites
Benoni, 1500

Phone: +27 (0)11 741 2500

Fax: +27 (0)86 521 3874

info@rematiptop.co.za

www.rema-tiptop.co.za

